



Land Use Analysis and Modeling for Big Cypress Creek

(08/25/2009)

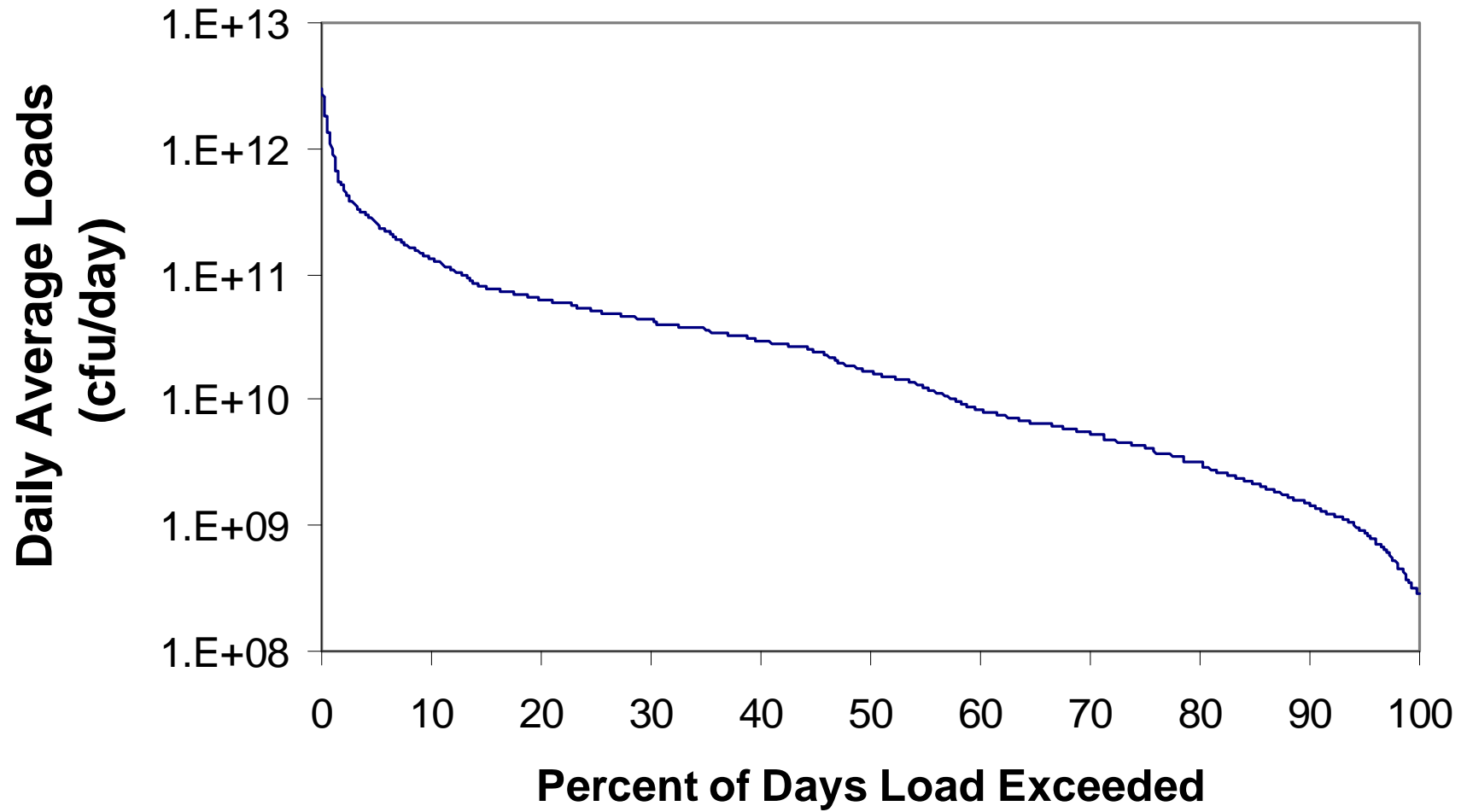
Kyna McKee
R. Karthikeyan (“*karthi*”)
Assistant Professor
Biological and Agricultural Engineering
AgriLife Research
Texas A&M University
karthi@tamu.edu
979.845.7951



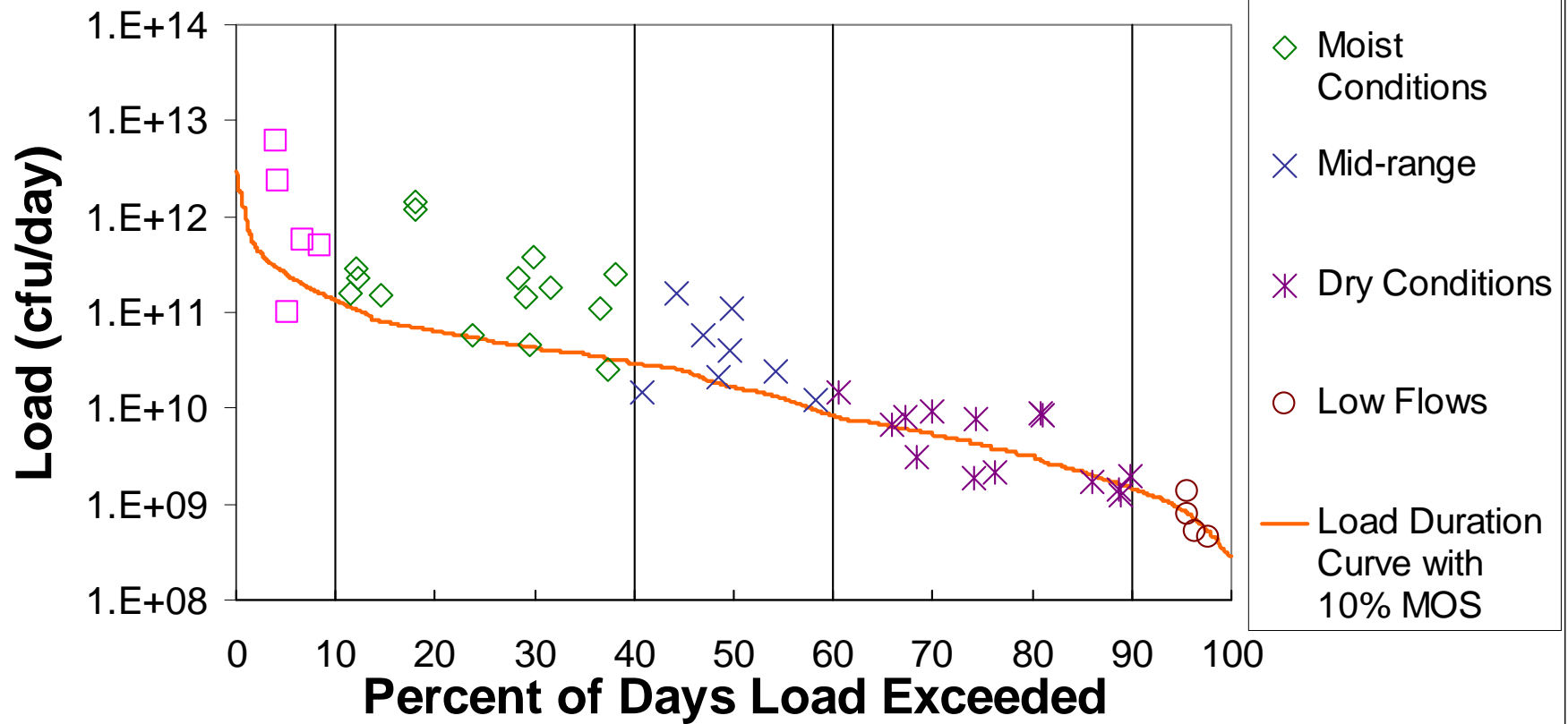
About the Watershed

- Consists of Big Cypress Creek and its tributaries Hart and Tankersley Creeks
- Lies between Lake Bob Sandlin and Lake O' the Pines
- Size: 284,487 acres
- Impaired with *E. Coli* Bacteria

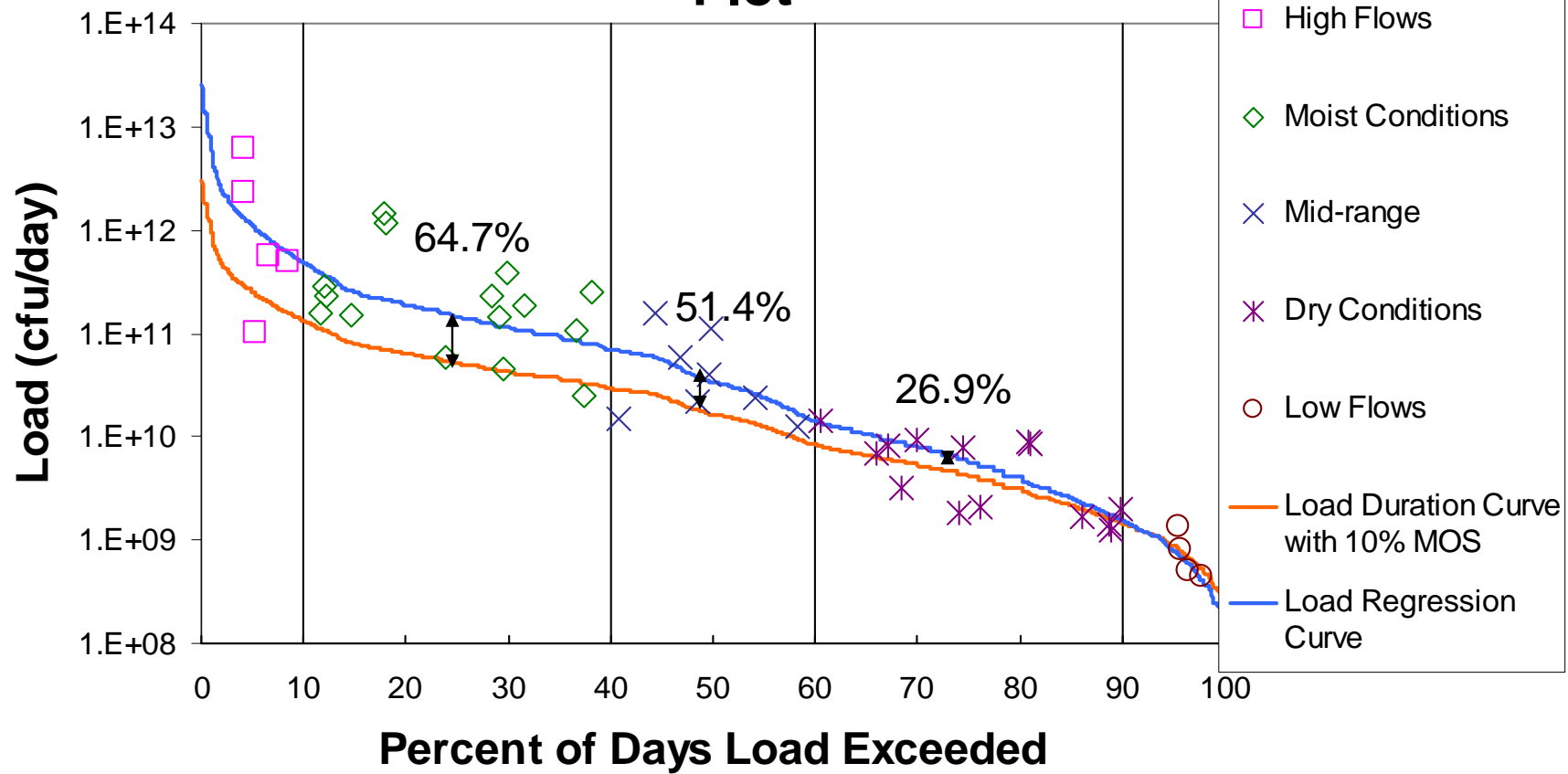
Load Duration Curve



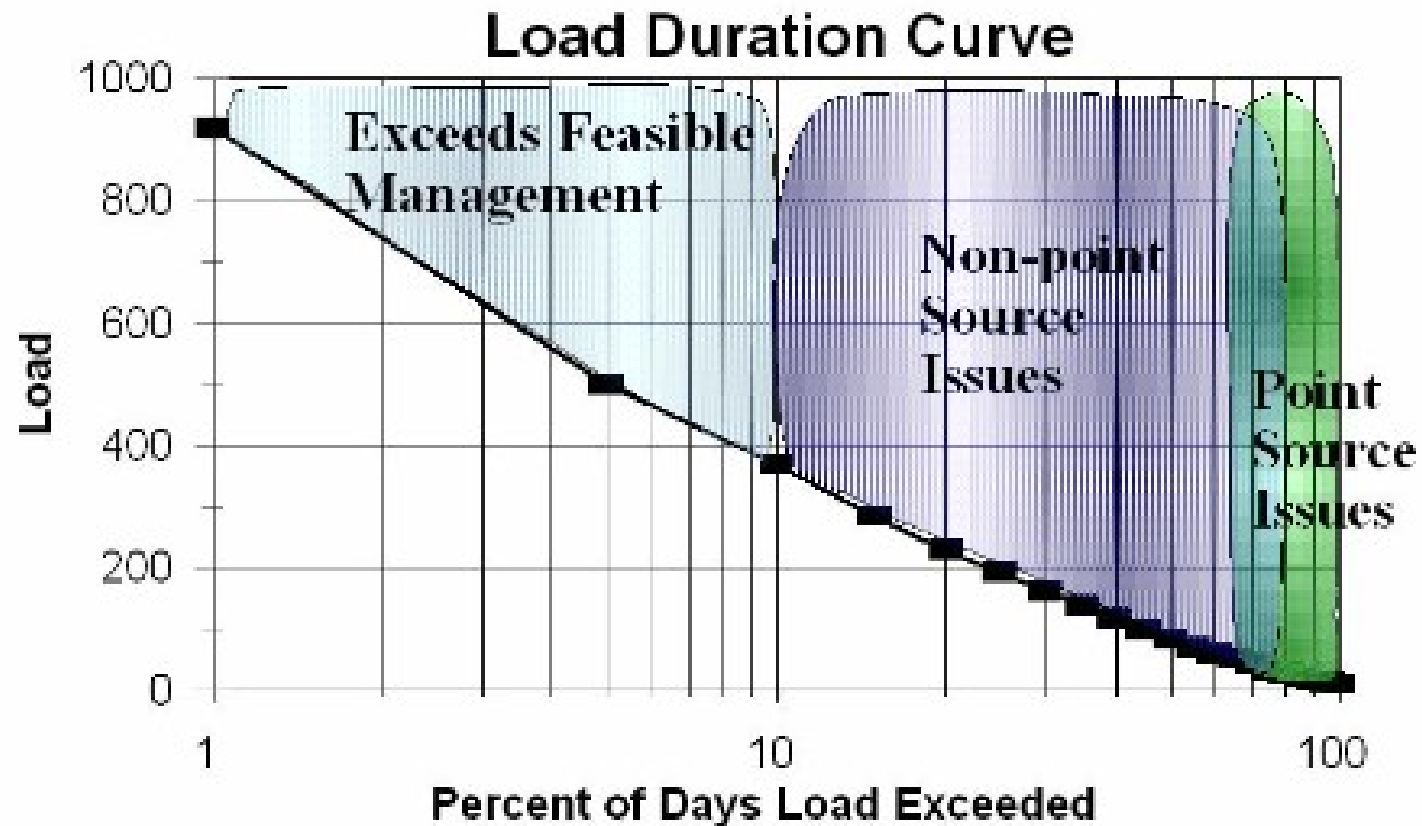
Load Duration Curve With Observed Loads During Different Flow Conditions



Load Regression Model on Load Duration Curve Plot



LDC Usefulness (source ID based on LDC)





SELECT

- Land use/ land cover data updated

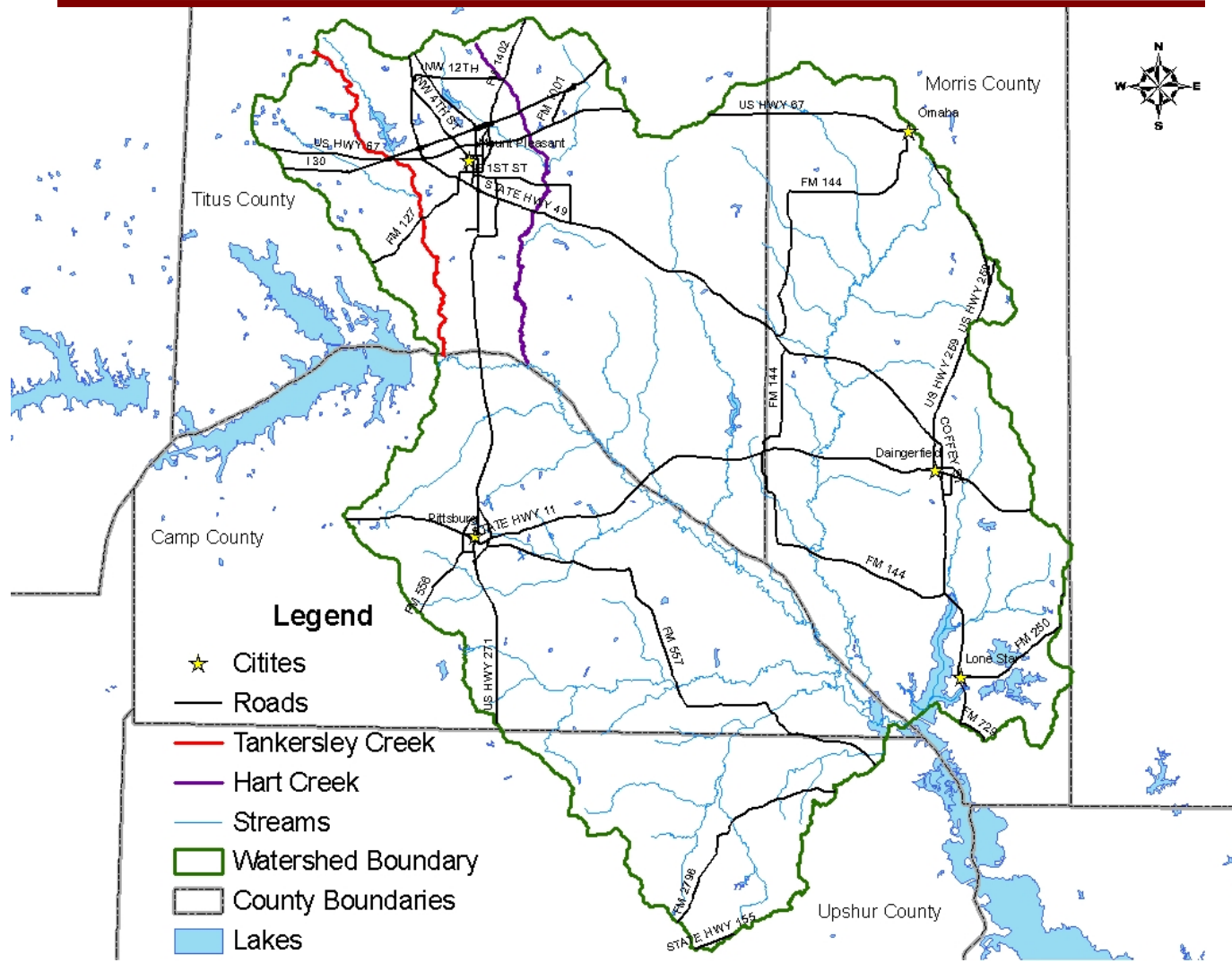
- Watersheds delineated

- Data layers needed for SELECT
 - Land use
 - Hydrography (stream network)
 - Urban areas
 - Watershed boundary
 - County boundary
 - Soils
 - Wastewater treatment plants
 - Census

 - Population density
 - Cattle
 - Wild life



Big Cypress Creek Map





Big Cypress Creek Station Map

